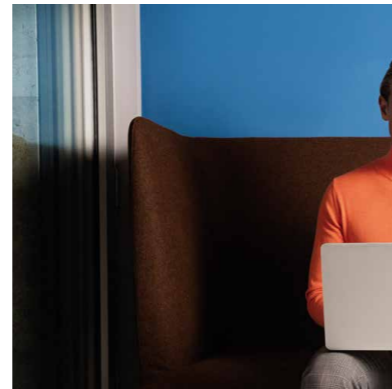
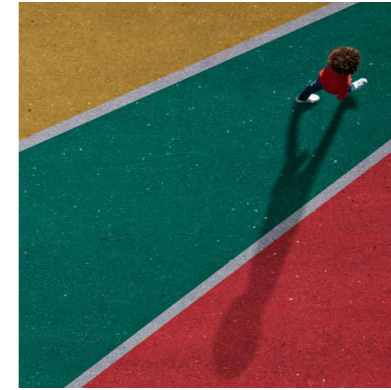


The Stonic



Movement that inspires



LIFE IS WHAT YOU MAKE OF IT.

WELCOME TO THE WORLD OF KIA.



Life is spectacular. It is vivid, unpredictable and exciting in all its facets. Whatever will happens, wherever you will go and whatever you will discover, Kia is with you.

We at Kia have dedicated our lives to making a contribution towards building a better future. That is why we develop and build cars which help you to discover and enjoy new horizons. Cars with stunning designs, advanced technologies and smart solutions. Cars with our remarkable 7-year warranty as proof of our outstanding quality. Whatever we do, we are driven by one mission: to always exceed your expectations. We call it 'The Power to Surprise'.

Now, we invite you to take a closer look and allow us to surprise you.



Grasp every moment

Created for drivers who grasp every moment, push every boundary and relish every adventure, the Kia Stonic brings fresh excitement and a free spirit to the crossover experience. With its sleek muscular body, sporty compact styling, exceptional handling and outstanding performance – the new Kia Stonic is for those who always demand more from life. Two tone model shown is not available in Ireland.





Escape the everyday

From the first glance, the new Kia Stonic sets its own rules, with looks that challenge convention. Its dynamic sporty appearance at the front is thanks to the 3-dimensional shape of the grille, vertical fog lamp housings and integrated headlamps with powerful LED Daytime Running Lights. Add to that a choice of 7 one-tone body colours, and you have a style that simply says, 'my life... my way'.

Challenge convention

From behind, the agile Kia Stonic makes a striking and lasting impression. The dramatically raked, spoiler capped backlight window and bold wheel arches give it a muscular view, whilst three-dimensional graphics inside the rear combination lamps make it truly striking. What's more, its sleek, sculpted tailgate and airflow-regulating silver skid plate give it that strong but silent urban feel which is guaranteed to turn heads.





Be true to your own identity

Living in the moment means no boundaries, and that's exactly what you can expect inside the new Kia Stonic. Sculpted contours immediately please the eye and the senses, making driving fresh and fun. The D-cut steering wheel is shaped to stay clear of your legs, whilst the other controls are designed and positioned to place you and your demands in perfect unison.

Seize every second

When you're in control, information is essential, and the new Kia Stonic puts it right where you need it, while banishing any distractions. Bluetooth technology offers hands-free access to your phone using voice recognition, whilst the state-of-the-art information system with its floating colour touch screen keeps you fully informed and entertained.



4.2-inch supervision cluster (K3 only)

Between the speedometer and tachometer, the screen displays auto and audio information. An optional TFT-LCD screen offers multiple languages and pop-up messages too.



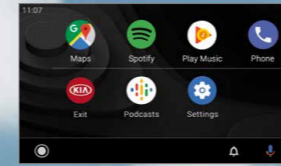
USB front charger

A USB outlet lets you charge mobile phones and other compatible devices.



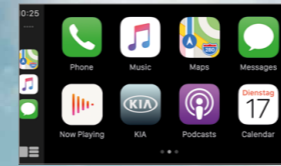
Rear USB charging port

A USB jack at the rear of the centre console lets rear-seat occupants charge their devices too.



android auto

Android Auto™ is designed to keep you perfectly connected to your phone – while minimizing distractions so you stay safe on the road. The simple, intuitive interface lets you access features like Google Maps, apps, music and voice control, and automatically organizes info into simple cards that appear just when they're needed.



Apple CarPlay™ is a smart, safe way to use your iPhone while driving. It takes all the things you might want to do, and puts them into your Stonic's display, so you can get directions, make a call and listen to music – all while staying focused on the road.



8" colour screen navigation system

The multi-language system includes a high-definition 8" TFT-LCD screen and a reversing camera display.



Share the experience

Special moments in life are more fun when you share them with friends and family. That's why the new Kia Stonic's roomy interior can seat up to five people with ample space for stretching and relaxing. And when you're on the move or simply chilling out, the up-to-date entertainment choices, automatic air conditioning and heated front seats make the whole experience even more inviting. Interior shown is K3 model.

Open to any possibility

When routine is the last word on your mind, the Kia Stonic is designed to put your plans and dreams in motion. With folding and split seats, and spacious interior and flexible capacity from 352 litres to a huge 1,155 litres, it's easier than ever to set out and explore or simply tackle whatever the day brings.



Adjustable cargo floor

Position the cargo area floor higher to be flush with the folded seat backs (left) or lower to accommodate tall items (right).

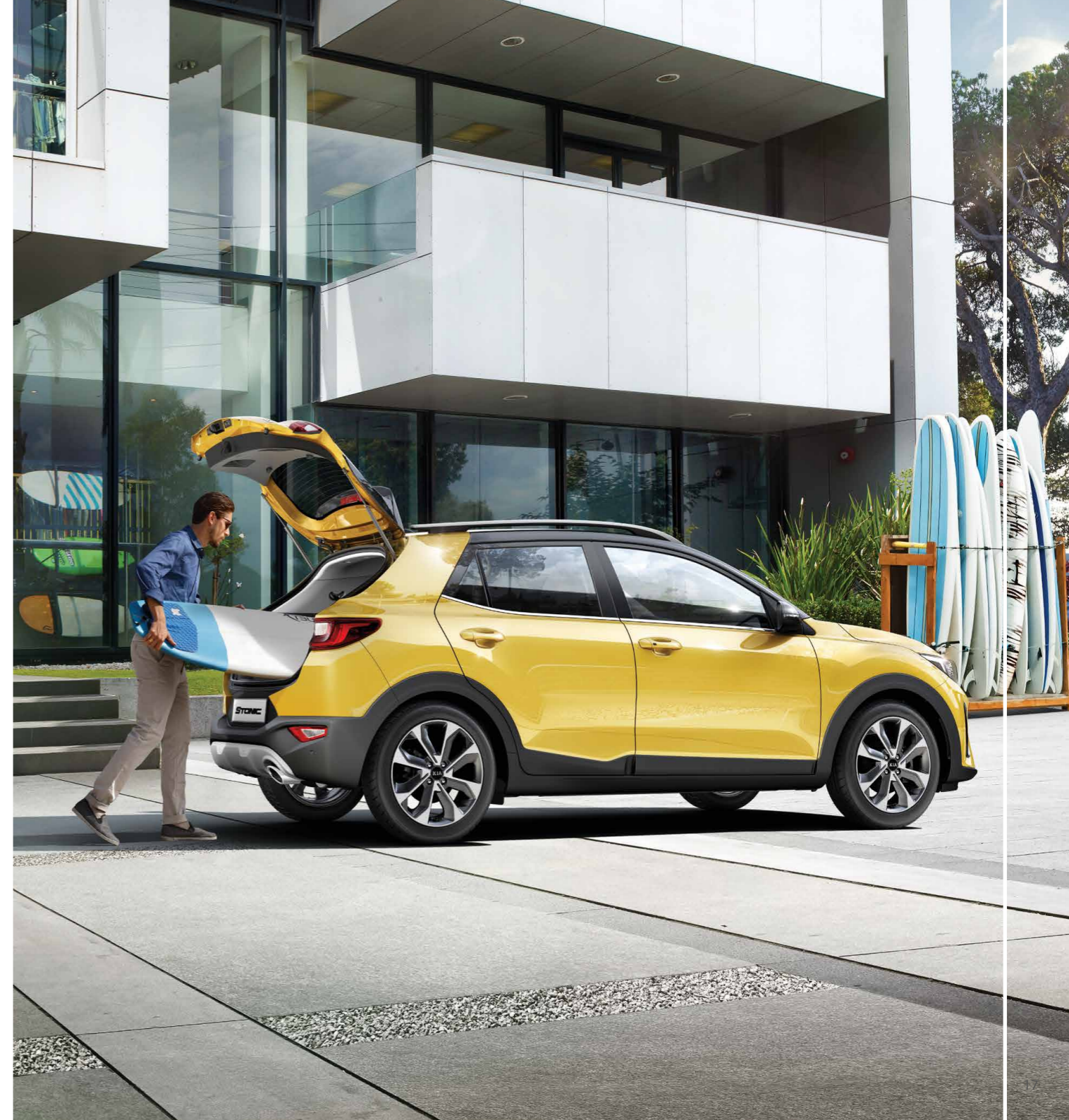


Folding rear seats:

Rear seats fold nearly flat, so you can fit long or bulky items in the extended cargo space.

60:40 split-folding rear seats:

The rear seat backs split 60:40 and fold flat separately, offering you useful choices for managing cargo and passenger space.





Dynamic in every way

When you're just as happy zipping around the city streets as you are exploring what's over the next horizon, the Kia Stonic's choice of two extremely reliable petrol engines offers dynamic performance with lower emissions, making every drive you make a joy and a pleasure.



Automatic transmission Enjoy smooth acceleration, agile gear shifts and fuel economy with the 7-speed DCT Dual Clutch Transmission. Coming Soon!



Manual transmission 6-speed transmissions offer quick, smooth gear changes and gear ratios that are matched to engine torque curves, boosting power and efficiency.

Forge new boundaries

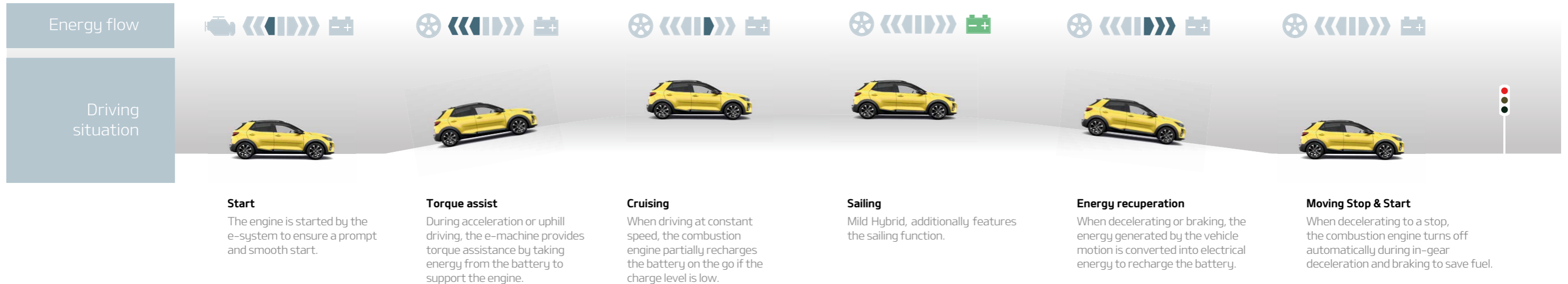
The new Stonic features an EcoDynamics+ Mild Hybrid Powertrain System, offering low-emission everyday driving. By cleverly pairing the latest 1.0 T-GDi gasoline engine with a 48-volt lithium-ion battery, it can reduce fuel consumption and vehicle emission levels. What's more, the integrated e-system recovers kinetic energy during deceleration phases to provide torque assistance when accelerating.



Simplified visual representation of the Mild Hybrid iMT sailing operation.

Sailing Mode

When the driver lifts their foot from the throttle and lets the car sail without accelerating or braking, depending on the charge level of the 48-volt battery the engine will seamlessly and smoothly switch off, resulting in a more efficient ride. As soon as the throttle or brakes are pressed, the engine will immediately take over. The sailing function and the distance covered with the engine off depend on driving conditions and vehicle speed.



Expand your horizons

Discovering new places and experiences is a lot easier when you know you're supported by the latest Kia Stonic technology. Not only will it inspire and help you discover what you're looking for, but will also add an exciting dynamic to every element of your journey.



Protect what you love

Wherever you are, whatever you're doing, you can be sure that the Kia Stonic is protecting you and the people around you. That's because it's engineered to help drivers stay out of trouble and to manage collision forces in ways that minimise damage.



Lane Keeping Assist (LKA)

When you start drifting out of your lane, LKA alerts you and corrects your steering to keep you in the lane.



Hill-start Assist Control (HAC)

When you're on a steep upward incline, pulling away from a standing start can be a concern, but don't worry, HAC is designed to stop you from rolling backwards.

Vehicle Stability Management (VSM)

Working in concert with the motor driven power steering, Kia's VSM helps ensure that the Stonic remains stable when simultaneously braking and cornering.

AHSS STEEL FOR GREATER STRENGTH AND ADDED CABIN PROTECTION

The Stonic uses Advanced High Strength Steel (AHSS) to deliver greater average tensile strength that makes the body phenomenally rigid, enhancing cabin protection as well as dynamic performance.



98 METRES OF STRUCTURAL ADHESIVE FOR REDUCED NOISE

Greater use of structural adhesive means the new Kia Stonic is both rigid and light, and offers outstanding noise and vibration management.

8 HOT-STAMPING ZONES FOR EXTRA STRENGTH

The Stonic features hot-stamping of components in eight core stress areas, contributing to exceptional rigidity, meaning the strengthened body structure helps provide improved crash protection.

6 AIRBAGS

Protection includes front airbags for the driver and front-seat passenger, two air-bags at the sides and two curtain airbags running the length of the cabin.



Anticipate the unexpected

With Stonic's DRIVE WISE technology, being at the wheel is simply more satisfying. Whether you're parking, manoeuvring city streets, in the fast lane or on the open road, DRIVE WISE features watch out for trouble, alert you and even step in to help you stay in the clear.

Lane Following Assist (LFA)

The system uses camera and radar sensors to maintain a safe distance to the preceding vehicle and monitors road markings to keep your car in the centre of your lane.



Reverse Parking Distance Warning (PDW) with Switch On/Switch Off button

Ideal for confident parking, PDW uses ultrasonic sensors mounted on the bumpers to warn of any obstacles in front or behind when manoeuvring into a parking space. The audible beeps can be switched on or off.



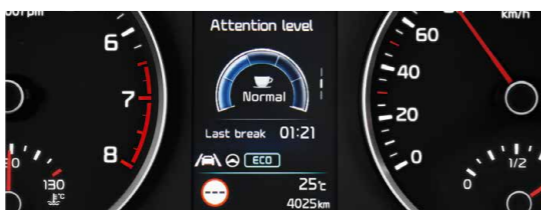
High Beam Assist (HBA)

Responding automatically to the brightness of the lights of other vehicles and road conditions, HBA switches off the high beams temporarily to reduce glare that may affect other drivers.



Driver Attention Warning (DAW)

To help prevent distracted or tired driving, DAW monitors driver and vehicle inputs. If it senses reduced attention, it sounds a chime and displays a warning in the supervision cluster display.



DRIVE WISE



DRIVE WISE uses the latest Advanced Driver Assistance System (ADAS) technologies to ensure occupant and pedestrian safety at all times, while never sacrificing the pleasure of driving.

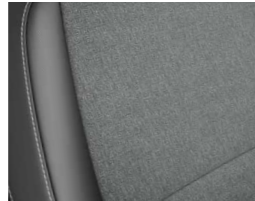
Forward Collision-Avoidance Assist (FCA)

Combining radar and camera data, FCA activates the brakes when it detects sudden braking by a car ahead, and can stop completely from speeds up to 60 km/h. If FCA senses a pedestrian or cyclist ahead, it warns you. If you don't respond, it will brake for you to avoid a potential collision or lessen its impact.

Relish every detail

Whether your style is urban or outdoorsy, let your personality shine through with a Stonic interior treatment and make your own personal statement. You can choose from a variety of tasteful and durable color and fabric treatments that shout (or whisper) the real you.

Black One-Tone interior



K2 standard cloth

The interior is upholstered in a combination of soft tricot and woven cloth with a muted dark grey pattern. The coordinated door and dash trim provides a consistently fresh and relaxing environment.



Two-Tone Grey Interior



K3 two-tone grey artificial leather trim

The grey artificial leather trim is embossed in a subtle diagonal plaid arrangement of micro-perforations for breathability. Matching trim on the doors and dash gives the interior a welcoming ambience.



Expect more

True style is knowing your own mind and expressing your own personality. That's why the Kia Stonic comes with a range of custom-designed accessories, from eye-catching side and tailgate trims to striking entry guards and more. Here's just a small selection of the wide range you can choose from to make your Stonic uniquely yours.



All-weather mats, with grey accent

Whatever adventure you've been on, don't worry about wet, muddy or sandy shoes when you get back in the car. These durable and easy-to-clean floor mats protect the whole of your cabin floor. Also available in the red accent.



Trunk liner

However wet, muddy or grimy things get, this custom-made liner will protect your trunk area. It is durable, anti-slip and waterproof with raised edges. Branded with the Stonic logo.



Tailgate trim line, brushed

When attention to detail is a must, this brushed stainless steel tailgate trim line is the perfect expression of style and substance. Also available in chrome optic.



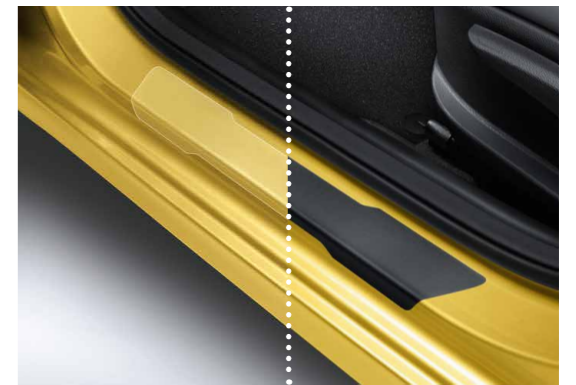
Side trim lines, brushed

Uniquely elegant, these brushed stainless steel mouldings give the side contours of your Stonic that extra touch of excitement. Also available in chrome optic.



Entry guards

First impressions always count and these stainless steel entry guards will give any passenger a flash of premium shine and a hint of the experience to come.



Door sill protection foils

Driver and passenger feet can cause everyday wear and tear to your door sills over time. Protect them with a new surface layer and add these durable foils. Available in black and transparent.

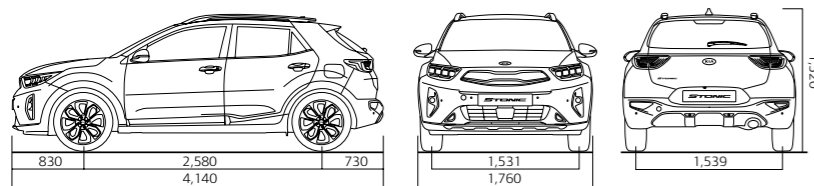
Stand out from the crowd

With its striking silhouette and muscular contours, the Stonic will always draw longing glances. But you can stamp your own extra personality on it by choosing to add upgraded wheels. After all, only you know what you want to say.

Engines	1.0 T-GDI		Coming Soon!	
Transmission	6-speed MT	6-speed iMT MHEV		7-speed DCT MHEV
Driveline	2WD			
Fuel type	Gasoline with Gasoline Particle Filter (GPF)			
Engine type	12 (four per cylinder)			
Engine displacement (cc)	998	998		
Max. power (PS/rpm)	100	100		
Max. torque (Nm/rpm)	172/1,500	172/1,500		
Maximum speed (km/h)	185	185		
Fuel Consumption - Low (l/100km)	6.9	6.9		
Fuel Consumption - Medium (l/100km)	5.3	5.3		
Fuel Consumption - High (l/100km)	4.7	4.8		
Fuel Consumption - Extra High (l/100km)	5.8	6.1		
Fuel Consumption - Combined (l/100km)	5.5	5.6		
Carbon Dioxide (CO2) Emissions (g/km)	125	128		
Kerb weight (kg) (max.)	1,223	1,253		
Gross vehicle weight (kg)	1,650	1,680		
Max. tow weight (kg) - braked	900	900		
Max. tow weight (kg) - unbraked	450	450		

Dimensions (mm)

*With roof rack



Dimensions and capacities

Overall length (mm)	4,140	Overall width (mm)	1,760
Overall height (mm) without roof rack	1,485 (15" & 16") 1,505 (17")	Wheelbase (mm)	2,580
Front overhang (mm)	830	Rear overhang (mm)	730
Fuel tank (litres)	45		
Luggage (VDA)	352		

The stated values for fuel consumption and CO2 emissions are measured according to the Worldwide Harmonized Light Vehicle Test Procedure (WLTP) in accordance with Regulation (EC) No 715/2007 in the version valid for the type-approval of the relevant vehicle model. Under normal circumstances, consumption figures may deviate due to, among other things, driving style, speed, use of comfort / auxiliary consumers, outside temperature, number of passengers / luggage and topographical conditions. Brochure includes information available at time of going to print.

Colours

Clear White _ UD



Silky Silver _ 4SS



Perennial Gray _ PRG



Sporty Blue _ SBP



Signal Red _ BEG



Smoke Blue _ EU3



Aurora Black Pearl _ ABP



Interior

	First row	Second row
Headroom (mm)	996	975
Legroom (mm)	1,070	850
Shoulder room (mm)	1,375	1,355

Wheels



16-inch Alloy Wheel



17-inch Alloy Wheel



Bring on the future

7-year vehicle warranty

Every Kia benefits from a 7-year/150,000 km new car warranty (up to 3 years unlimited; from 4 years 150,000 km). This bumper-to-bumper warranty is free and transferable to subsequent owners, provided the car is regularly maintained in accordance with the servicing schedule.

5-year paint warranty & 12-year anti-perforation warranty

High-quality body paint ensures long-lasting protection and shine for your new Kia. It also comes with superior corrosion protection and a 12-year warranty against rust from the inside out.

Stay in touch with Kia

Visit www.kia.com for all the latest news. Find out more about Kia and our exciting new car range. Get updates on achievements in alternative fuel development, like liquid gas, hybrid and fuel cell technology. Or discover what our Environment Research Centre is working on. We're also involved in major sporting events: Kia is an official partner of both UEFA and FIFA. We sponsor the Australian Open and the tennis star Rafael Nadal. Here in Ireland, Kia is a proud sponsor of the Kia Race

Financing

Your local Kia dealer can help you with a financing plan that's best suited to your needs. Please ask for details.

Care-3

Our Care-3 plan means looking after your new Kia is a piece of cake. In order to keep your new Kia Running like new, it has to be serviced every year. Now imagine having all the servicing your new Kia will need for the next three years sorted and paid for, in advance, and at a competitive price. Introducing Kia Care-3, the easy way to look after your new Kia, and protect your 7 year warranty.

Kia high-voltage lithium-ion battery units in electric vehicles (EV), hybrid electric vehicles (HEV) and plug-in hybrid electric vehicles (PHEV) are built to have a long life. These batteries are covered by the Kia warranty for a period of 7 years from initial registration or 150,000 km, whichever comes first. For low-voltage batteries (48 V and 12 V) in mild-hybrid electric vehicles (MHEVs), the Kia warranty covers

a period of 2 years from initial registration regardless of mileage. For EVs only, Kia guarantees 65% of the battery capacity [available at the time of delivery]. Reduction of battery capacity in PHEV, HEV and MHEV is not covered by the warranty.



The Kia 7-year warranty

Kia warranty covers a period of 7 years from initial registration or 150,000 km, whichever comes first. Valid in all EU member states (plus Norway, Switzerland, Iceland & Gibraltar). Deviations according to the valid guarantee conditions, e.g. for battery, paint and equipment, subject to local terms and conditions.

All information and specifications are correct at the time of printing and are subject to change without notification. However some of the models and features shown in this brochure may vary from the models and equipment available here in Ireland. Please consult with your dealer to ensure that the vehicle you order has the specification you require. Due to the limits of the printing process, the car body colours shown may differ slightly from actual colours.

Kia Motors Ireland,
Unit A8 Calmount Park,
Calmount Road,
Dublin 12,
Ireland



Movement that inspires